

# MONTHLY MEMBERSHIP PROGRESS REPORT

LOCATION INDIA

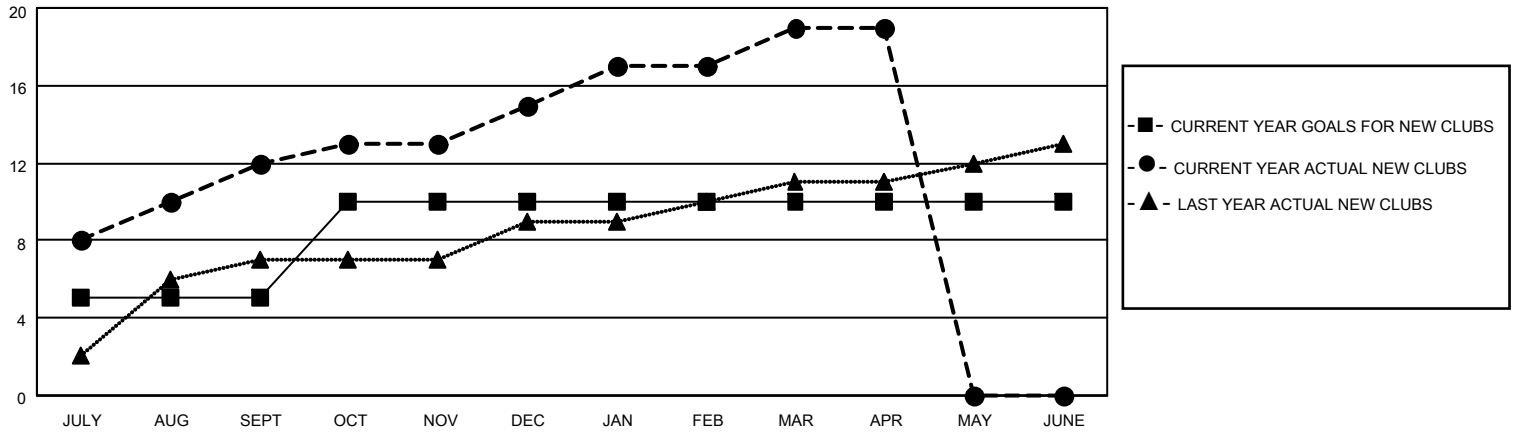
District 324 H

Results as of: 4/30/2023

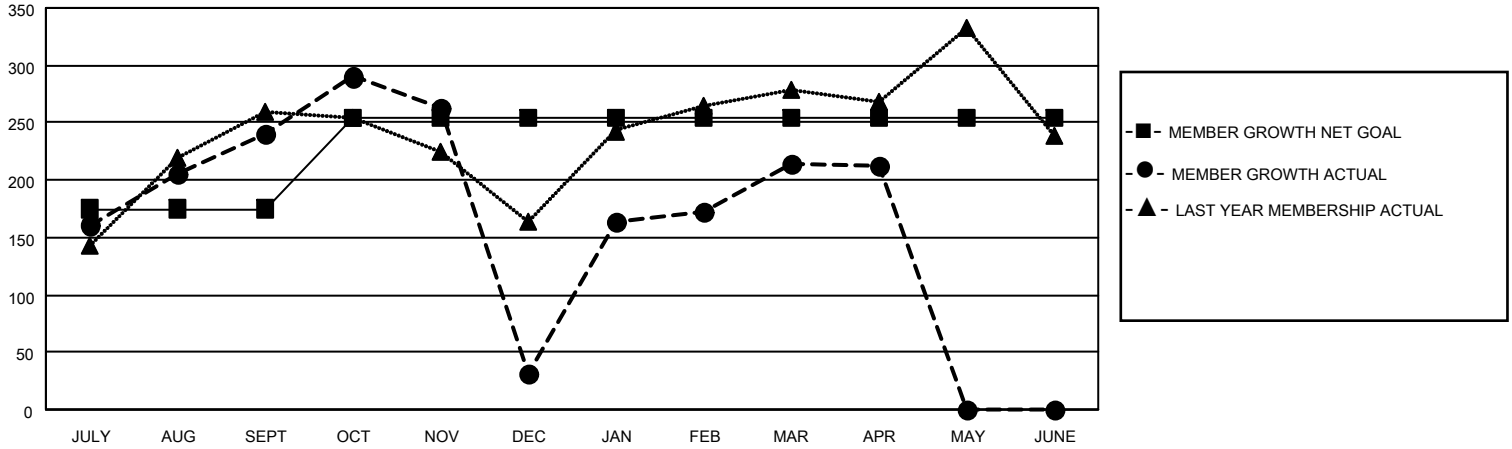
Clubs			
RESULTS FOR 2022-2023			
QUARTER	NEW CLUB GOAL	NEW CLUBS	DROPPED CLUBS
JULY/AUG/SEPT	5	12	1
OCT/NOV/DEC	5	3	6
JAN/FEB/MAR	0	4	1
APR/MAY/JUNE	0	0	0

Members			
RESULTS FOR 2022-2023			
QUARTER	MEMBER GROWTH NET GOAL	MEMBER GROWTH ACTUAL	DROPPED MEMBERS ACTUAL (including transfers)
JULY/AUG/SEPT	175	391	139
OCT/NOV/DEC	80	119	322
JAN/FEB/MAR	0	273	50
APR/MAY/JUNE	0	10	11

**GOALS AND ACTUAL NEW CLUBS CUMULATIVE**



**GOALS AND ACTUAL MEMBERS CUMULATIVE**



**DROPPED CLUBS: 8**

**93 CLUBS OF 109 ADDED 1 OR MORE NEW MEMBERS**

**GENDER DISTRIBUTION**

MALE	2,912 (84.58%)
FEMALE	530 (15.39%)
NON BINARY	1 (0.03%)
PREFER NOT TO ANSWER	0 (0.00%)

**DROPPED MEMBERS**

[CLICK HERE FOR CUMULATIVE MEMBERSHIP DATA](#)

DECEASED	12
CLUB CANCELLED	172
OTHER	338
<b>TOTAL</b>	<b>522</b>

TOTAL FAMILY UNIT MEMBERS 937

FAMILY MEMBERS PAYING HALF DUES 569